

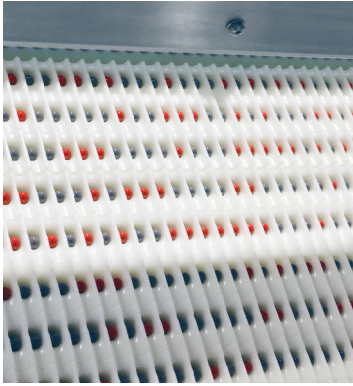
# COUNTSAFE™ – SLAT COUNTER

AUTOMATED INSPECTION SYSTEM PROVIDING  
UNMATCHED ACCURACY AND EFFICIENCY



 **OPTEL™**  
Traceability technologies for a better world

The OPTEL's **CountSafe™ - Slat Counter** is the most advanced automated vision inspection solution available. The high-performance inspection system provides slat counter machines with increased accuracy which helps to avoid costly recalls.



The **CountSafe™ - Slat Counter** can inspect: tablets, capsules, gel caps, dual colored capsules and dual colored tablets. This cost-effective, ergonomically designed **CountSafe™ - Slat Counter** detects wrong color, missing, broken, chipped or over/undersized tablets, foreign object/material and overall product integrity.

The **CountSafe™ - Slat Counter** uses cutting-edge optical technology and vision algorithms. This solution is compatible with any manufactured slat counters or can be integrated into an existing line with minimal downtime. OPTEL provides complete integration, training and validation. This turnkey solution follows GMP guideline.



### KEY FEATURES

- Exact count with accuracy
- Missing tablets or capsules
- Supplemental tablets or capsules
- Compatible with carry-around tablets or capsules
- Partial or blank slat compatible
- Air knife for dust protection
- Dual ejection table capability



### BENEFITS

- Excellent ROI
- Avoids wrong product introduction
- 100% of products inspected
- 100% accurate count

**PERFORMANCE**

**Designed for** Tablets, capsules, caplets, gelcaps, pills

**Production Rate** Up to 600 slats per minute

**VISION SPECIFICATIONS**

**Field of View** 115 mm x 45 mm per camera

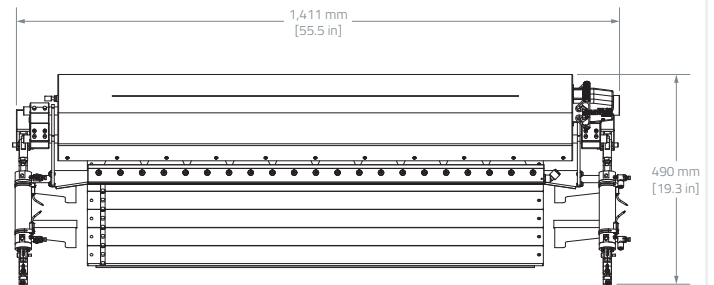
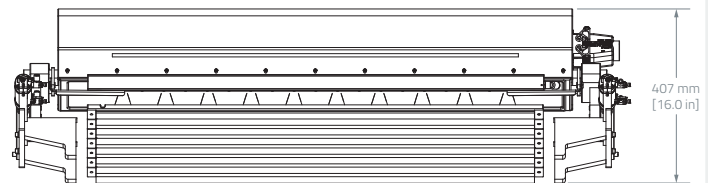
**Inspection Capability**

- Color
- Presence
- Stain
- Lightness/Darkness
- Size
- Broken Tablets
- Foreign Objects

**UTILITIES**

**Power Requirements** 120-240 VAC 50/60 Hz

**Compressed Air** 6 bar (90 psi)

**TOP VIEW****FRONT VIEW**

## TRACKING PROCESS OVERVIEW

Tracking is used to ensure that products can be located at any time on the production line in order to prevent defective products from reaching the next step of the production process. It is handled by OPTEL using hardware sensors and encoders.

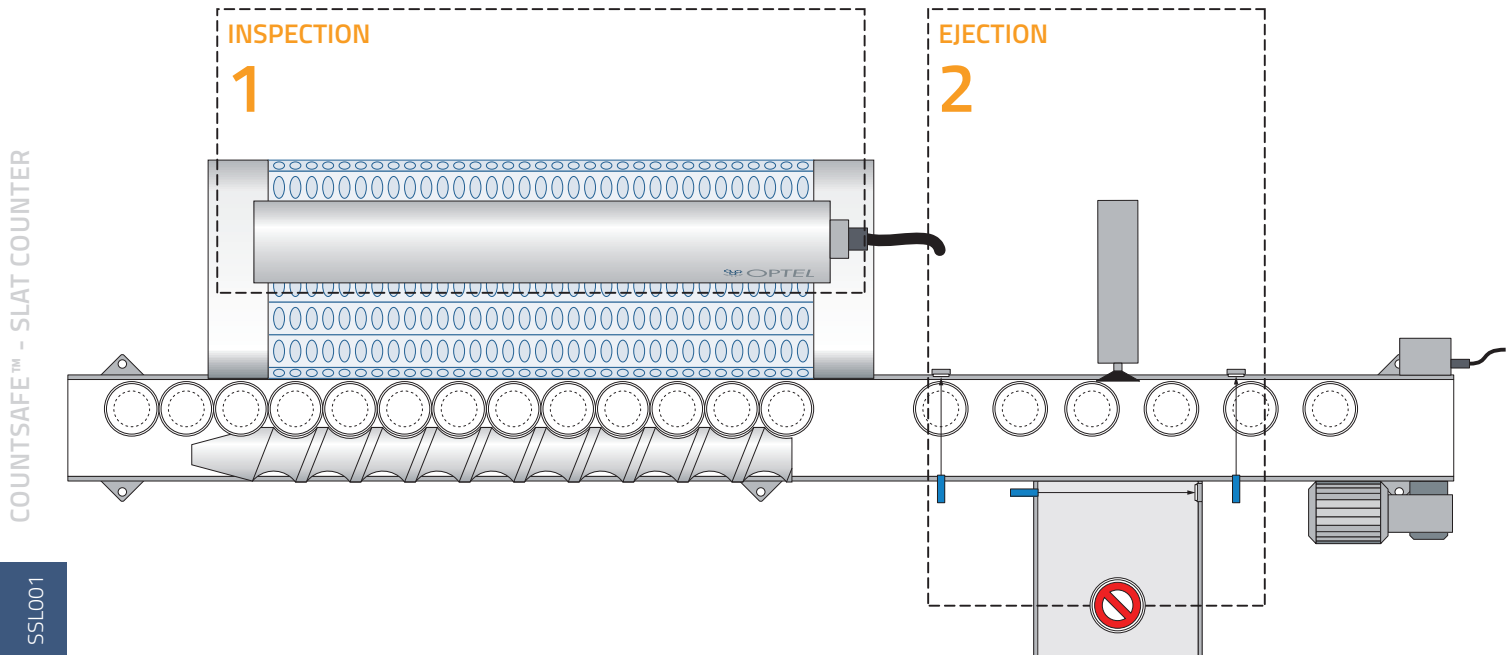
The illustration below depicts the CountSafe™ Slat Counter and other usual elements used within a typical tracking process, which in this case includes these main steps.

### 1 INSPECTION

The cameras inspect and count the tablets from a full slat in a single acquisition.

### 2 EJECTION

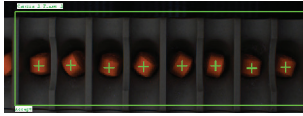
Any bottles containing defective tablets and/or the wrong amount of tablets are tracked down to be ejected. The CountSafe™ Slat Counter enables dual ejection, facilitating the separation of wrong counts from other items for efficient differentiation.



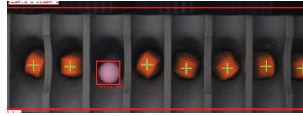
## PRODUCT INSPECTION

### CAPSULES IN SLAT FILLERS

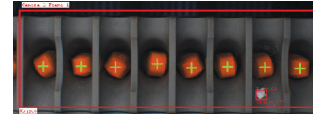
Color, size, presence and integrity verification on products



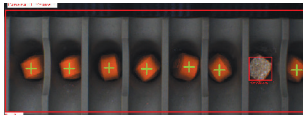
✓ No defect



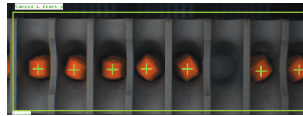
✗ Wrong color, i.e., wrong product



✗ Foreign material



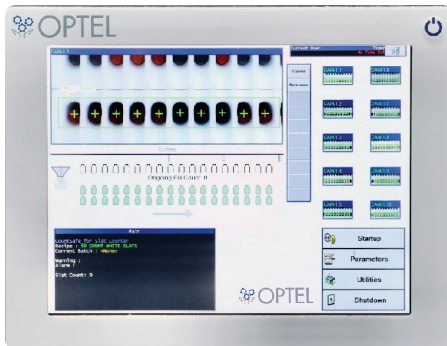
✗ Broken product



✗ Missing product



✗ Oversized product

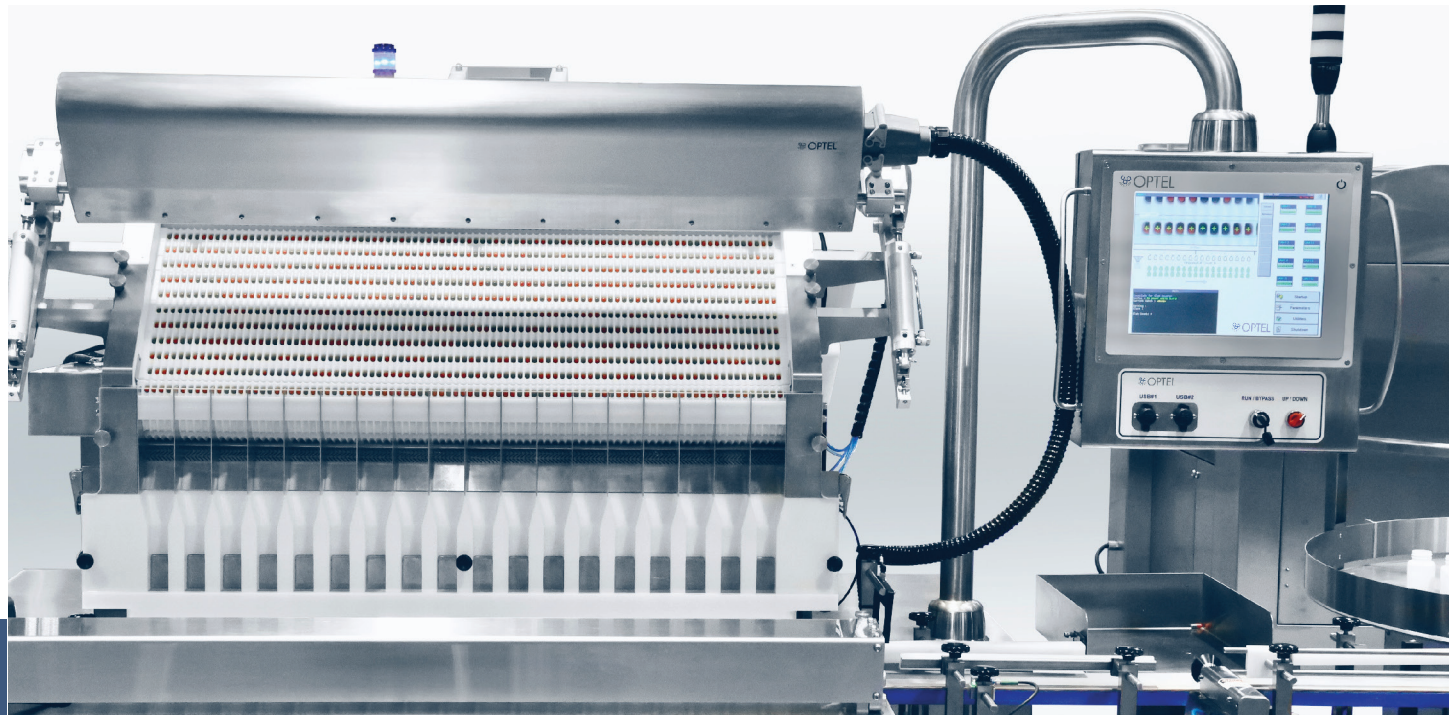


# COUNTSAFE™- SLAT COUNTER

## STANDARD SOLUTION SPECIFICATIONS

SALES ITEM	SOLUTION	SPECIFICATIONS
SSL001	<b>CountSafe™ - Slat Counter</b>	<ul style="list-style-type: none"><li>CountSafe™ for slat counters is a high-performance inspection system provides slat counter machines with increased accuracy, which helps to avoid costly recalls.</li><li>OPTEL Human-Machine Interface (HMI) to be integrated in OEM</li><li>Multi-segment LED tower light indicator</li><li>Floor-mounted electrical enclosure</li><li>Encoder with mounting kit</li><li>Confirmation sensor, good product sensor, sync sensor</li><li>Ejection bin for ejected product</li><li>Pneumatic ejector with mounting brackets</li></ul>

COUNTSAFE™ - SLAT COUNTER



SSL001

SALES ITEM	OPTIONS	SPECIFICATIONS
SSL002A	<b>Optical head for 16" slats</b>	<ul style="list-style-type: none"> <li>Optical head for 16" slats</li> <li>Includes 4 cameras to cover a 415 mm width field of view</li> </ul>
SSL002B	<b>Optical head for 20" slats</b>	<ul style="list-style-type: none"> <li>Optical head for 20" slats</li> <li>Includes 5 cameras to cover a 515 mm width field of view</li> </ul>
SSL002C	<b>Optical head for 28" slats</b>	<ul style="list-style-type: none"> <li>Optical head for 28" slats</li> <li>Includes 7 cameras to cover a 715 mm width field of view</li> </ul>
SSL002D	<b>Optical head for 40" slats</b>	<ul style="list-style-type: none"> <li>Optical head for 40" slats</li> <li>Includes 10 cameras to cover a 1014 mm width field of view</li> </ul>
SSL003A	<b>Air Knife for 16" slats optical head</b>	<ul style="list-style-type: none"> <li>Air knives for dust removal on optical head</li> </ul>
SSL003B	<b>Air Knife for 20" slats optical head</b>	<ul style="list-style-type: none"> <li>Air knives for dust removal on optical head</li> </ul>
SSL003C	<b>Air Knife for 28" slats optical head</b>	<ul style="list-style-type: none"> <li>Air knives for dust removal on optical head</li> </ul>
SSL003D	<b>Air Knife for 40" slats optical head</b>	<ul style="list-style-type: none"> <li>Air knives for dust removal on optical head</li> </ul>
SSL004	<b>Additional Ejection System</b>	<ul style="list-style-type: none"> <li>Additional ejection system for slat filler</li> <li>Includes pneumatic cylinder for ejection and ejection tray</li> </ul>

## ORDERING INFORMATION – STANDARD SOLUTION CONFIGURATION

Encompassing all of OPTEL's expertise and legacy, this standard CountSafe™ - Slat Counter configuration is a predesigned hardware and software solution that meets your product needs quickly and cost-effectively, while conforming to current industry standards.

To obtain a quote, contact your Account Director, who will work with our quote department to provide you with accurate pricing for your solution. Should these options not fit your specific requirements, feel free to discuss your needs with your Account Director, as we also provide custom solutions upon request.

## ADDITIONAL INFORMATION REQUIRED FOR QUOTE

- User Requirements Specifications (URS)
- Product matrix

**NORTH AMERICA**  
**HEADQUARTERS**  
OPTEL Canada  
1989

**EUROPE**  
OPTEL Ireland  
2014

**EUROPE**  
OPTEL Germany  
2021

**ASIA**  
OPTEL India  
2016

**SOUTH AMERICA**  
OPTEL Brazil  
2017



[optelgroup.com](https://www.optelgroup.com)

©Optel Vision inc. d.b.a. "OPTEL Group", 2024. All rights reserved.